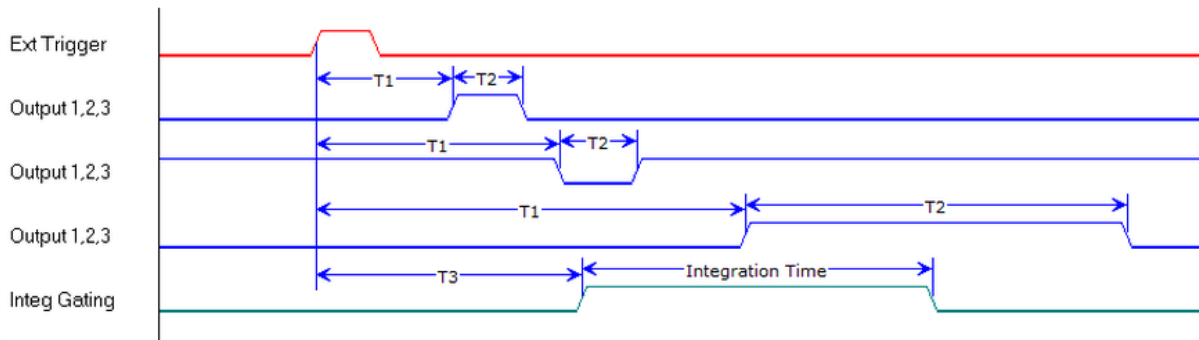


GratingWorks Spectrometer LIBS Timing Gating Control:

External Interrupt Trigger Mode



T1: 31.25ns – End of Integration Time +3.6ms, steps of 15.625ns

T2: 0 – End of Integration Time + 3.6ms, steps of 15.625ns

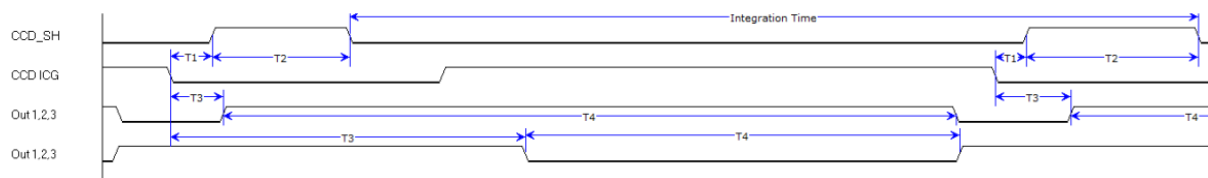
Output 1,2,3 Support both high active, low active and repetitive.

T3: 31.25ns – 67s, steps of 15.625ns.

Integration Time: 3us – 67s in steps of 15.625ns.

Normal Integration Mode:

In Normal Integration mode, the CCD is integrating all the time. It can have the highest acquisition rate.



T1: 0.25us fixed

T2: 1.75us fixed

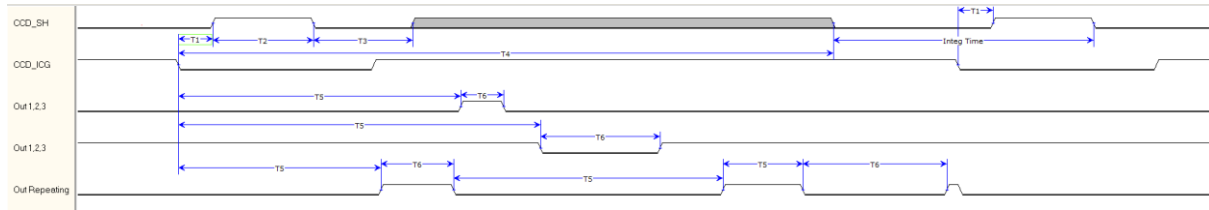
ICG low width 3us.

T3: 1/64us – Integration Time in steps of 1/64us. Supports both high active, low active and repetitive.

T4: 0 – next falling edge of CCD ICG in steps of 1/64us.

Integration Time: 3.7ms – 67 s in steps of 1/64us

Electronic Shutter Mode:



T1: 0.25us fixed

T2: 1.75us fixed

ICG low width 3us.

T3: 3us fixed

T4: User defined, Minimum 3700us.

T5: 1/64us – Integration Time in steps of 1/64us. Supports both high active, low active and repetitive.

T6: 0 – next falling edge of CCD ICG in steps of 1/64us.

Integration Time: 3us – 67 s in steps of 1/64